

We protect Suffolk!!!



Foot path

POLICE

Front cover by
Judah Bailey

Constable's COUNTY

AN UPDATE ON POLICING
FROM THE EAST, WEST AND
SOUTH OF THE COUNTY

AUG 2020



SUFFOLK
CONSTABULARY



Suffolk Police and
Crime Commissioner

Making Suffolk a safer place to live, work, travel and invest

INTRODUCTION

At last, there is some better news regarding the pandemic in Suffolk – the levels of infection and reporting of new cases continue to drop and life is slowly returning to some sense of normality as the lockdown eases. It's important we are not complacent though, Suffolk has sadly lost too many people to this virus and we need to keep doing the right thing to help keep cases to a minimum.

I am very pleased and proud of the way our police force's contributions towards mitigating the virus locally has made such a positive difference.

In spite of Covid 19, I'm really pleased to tell you recruitment of the extra officers planned by the government last year (Operation Uplift) and the extra officers and staff I promised to deliver from the extra council tax monies is forging ahead.

You may remember Suffolk's share of Operation Uplift provided sufficient funding to appoint 54 new officers for each of the following three years and after only three months our officer strength has increased by 17 – well ahead of schedule.

This welcome boost in officer numbers will benefit the whole county from Brandon to Beccles and Haverhill to Felixstowe. We all want more visible policing to help prevent crime and bring criminals to justice. I believe we will look back after three years and recognise the benefits Operation Uplift brought to Suffolk in our fight against crime.

The additional council tax money made a major contribution to increasing the county's policing budget by over £10m to nearly £144million – a real step change from where we were five years ago. When I made the unpalatable decision to increase your council tax in January,

there was a promise to keep everyone fully informed of the progress made in appointing the additional 20 officers and 16 support staff. I do this through a quarterly update which is available on my website, www.suffolk-pcc.gov.uk.

The main thrust of this year's increased budget was to make Suffolk a very hostile place for criminals by improving detection rates and delivering greater numbers of successful prosecutions. After all, that's what we want and pay for.

One of the other consequences of the pandemic for Suffolk which is of huge concern to me is the economic downturn because of the strong correlation between deprivation and higher levels of crime abuse, addiction and anti social behaviour. As PCC I will do everything possible to support local and UK based business and work with other organisations of all sectors to deliver that all important economic growth.

There is particular concern regarding the higher levels of unemployment in our younger generations and those working in lower paid and less skilled positions. It is only by working together in Suffolk that these enormous challenges will be tackled. I have proposed to other public sector leaders that all our businesses must do much more to provide work experience and placements for those still at school and provide more apprenticeships to provide some steps on the work ladder. If we all make a commitment to helping our youngsters I have no doubt the tide will start to turn.

In addition we can support the local economy through better and more thoughtful procurement processes and supply chain management by taking a serious look at enhancing the social value of what we spend. I have also suggested



there needs to be a careful study of our capital investment programme and if it is possible to start some of these projects earlier that will also aid the recovery.

As PCC our commissioning work and grants for victims services and crime and disorder reduction continues. Our team stands ready to help when required and support those voluntary sector organisations who do so much right across Suffolk.

Of course times are difficult but we must be optimistic about our future and I'm convinced the adoption of positive thinking will really help all of us. Together we will win!

**Police and Crime Commissioner
Tim Passmore**

Each summer our beautiful county swells with people coming to enjoy the outstanding beauty of our coastline and countryside, but equally the warm welcome that they always receive. This year we are already seeing increasing numbers of visitors coming into Suffolk.

Indeed, speaking to many of my staff, 'staycation' seems to be the way they have planned their holidays with many actually holidaying in Suffolk itself. Every year we plan extensively to ensure that we can police this increased demand and this year has been no different but with the obvious change in dynamics. I want to assure you that, as throughout the pandemic, we will be here in support of you, our communities and the business community.

Local policing areas have developed their own summer plans focusing on placing resources into particular 'hot-spot' areas. Policing will focus on engagement and prevention, and supporting local businesses (especially licenced premises) to help support the re-opening of venues in an informed and responsible manner that allows people to enjoy themselves whilst maintaining social distancing. I can assure you that resourcing is sufficient to meet anticipated demand but this does remain under continual review.

We do anticipate demand on our resources to rise as relaxation of restrictions continues. It will be a team effort across Suffolk involving collaborative working with partners and communities. Of course, our plans have an overwhelming and continuing support from our Specials and volunteers, which we are all extremely grateful for.

As the lockdown restrictions continue to be eased, I wanted to update you that work is continuing to prepare for

the move in Suffolk from the Response phase of Covid-19 to Recovery, although care is being taken to ensure we keep monitoring the current situation to avoid a second spike of the virus.

The #StickWithItSuffolk campaign incorporating social and digital media messaging, videos, magazine advertisements and radio advertising is helping to have a positive effect on people's behaviour according to the data we are seeing. Work is ongoing by public health and other relevant partners to identify any major workplaces where there is a potential for a heightened risk of Covid-19.

You can be reassured that Suffolk Public Health is closely linked in with Public Health England and has access to the data to determine at an early stage if there are concerns about the Covid-19 infection rate rising to levels which would present issues to localised areas. The Suffolk Covid 19 Coordination Centre is in operation and the Centre Duty Team meets three times a day to ensure it has systems in place, to respond to any surge in coronavirus.

I, like you, am concerned around the impact on our economy of the pandemic but I am particularly concerned of the potential impact on young people in our county. I am in discussions with the High Sheriff Bridget McIntyre and Dr Nikos Savvas (Principal and Chief Executive of West Suffolk College) to see how we can work together to support our young people and their futures.

We have just appointed three interns who will be working on some key projects for the constabulary over the summer months. We will be continuing to recruit police officers and I would encourage anyone interested in joining a very fulfilling career in the police



service to look at our website for further information.

Suffolk always comes together, and further good examples are Suffolk Community Foundation's work with the "Rebuilding Local Lives" campaign and the amazing donation from Ed Sheeran, and also the "Don't be a Tosser" BBC Radio Suffolk campaign which has just been relaunched to keep our towns and countryside clean and litter free. I am delighted that the constabulary is fully supporting both these initiatives.

Thank you for all your on-going support and that you enjoy this summer safely and responsibly.

**Chief Constable
Steve Jupp**

EAST

Area Commander



Superintendent Paul Sharp

You can report a number of non-urgent crimes online via our website - suffolk.police.uk/contact-us
You can also call the police on 101 to report crimes and other concerns that do not require an emergency response.
In an emergency, always call 999.

Lowestoft SNT

Lowestoft, Beccles and Bungay

"I want to ride my bicycle, I want to ride my bike!" With weather like we have had why not? But how secure is your bike when you leave it unattended? Do you know the serial number of your bike? On 20 July we had a report of a stolen bike in Lowestoft, we located it on the same day and returned it to the owner, due to the fact that the owner could accurately describe their bike and they reported it as soon as they could. Bikes can be expensive and quite often we have stolen recovered bikes that we can't find owners for as it either hasn't been reported stolen or we only have minimal description of the bike. We will be doing bike marking sessions during our 'street meets', so please see Police Connect or our Lowestoft police Facebook and Twitter pages for the dates.

The Safer Neighbourhood Team have been working with roads policing after reports of vehicle related anti-social behaviour in Ellough - proactive patrols will continue, but we would urge residents to report any issues in the area at the time.

The Safer Neighbourhood Team (SNT) and Neighbourhood Response Teams (NRT) have been patrolling Nicholas Everitt Park, Lound Lakes, Carlton Marshes and Oulton Marshes due to an increase in reports of ASB, and these patrols will continue, but would urge you to report any incidents of ASB when it happens.

A vehicle was stopped by police on the A14 and the driver was arrested at the time for multiple offences including suspicion of burglary. Officers were able to search multiple locations including one in Oulton Broad and discovered a stolen trailer and JCB previously reported from Mutford. Other property such as lawnmowers and other gardening tools were also seized, Lowestoft CID are continuing the investigation and hopefully will be able to reunite the seized property to their owners.



Inspector Nick Aitken



Engagement Officer PC Amy Yeldham

Halesworth SNT



Inspector Mark Jackson



Engagement Officer PC Simon Green

Halesworth, Leiston and Eye

Due to the government relaxing some of the Covid regulations, it has been possible for us to re-start 'street-meets'. Our engagement would normally involve attending events organised by community groups and organisations. These remain disallowed so I have been calling at our towns & villages with colleagues from the Halesworth SNT instead. We've been doing so in our mobile police station and promoting crime reduction, as well as offering our free cycle security marking service, which has proven really popular, with many bikes now more secure.

At the time of writing, we are about to call at Southwold & Thorpeness and we shall be conducting further visits before the end of the summer. These will be Eye, Debenham, Framlingham, Halesworth, Stradbroke, Laxfield, Southwold, Aldeburgh & Thorpeness, with dates announced through posts on the Halesworth police Facebook page.

In June, two officers attended Covehithe beach following a report of a possible unexploded ordnance device or bomb. This is not uncommon on our Suffolk coast and dealt with expertly by the Army bomb disposal team from Colchester. Should you find something similar, please leave it in situ & dial 999. If you can, remain on the beach, at least 100 metres from the item until officers arrive so you keep others away & can direct the officers on arrival.

We have a new Special Constable at Halesworth. SC Isabel Martin-Wiles has been on patrol with PC Ian Ogley and spent a duty in July checking security at sports grounds and pavilions in response to a series of burglaries where valuable lawn mowers, cycles & plant equipment had been stolen. Issy is really enjoying her new role and the opportunity to "give something back" to her community. We will always welcome queries from those interested in joining the Suffolk Special Constabulary. You can ask any regular or Special Officer about how to join - contact your Community Engagement Officer or see the recruitment pages from our website [here](http://www.suffolk.police.uk).

SOCIAL SNAPSHOT

IMAGES TAKEN FROM SUFFOLK POLICE SOCIAL MEDIA ACCOUNTS



SOUTH

Area Commander



Superintendent
Kerry Cutler

You can report a number of non-urgent crimes online via our website - suffolk.police.uk/contact-us

You can also call the police on 101 to report crimes and other concerns that do not require an emergency response.

In an emergency, always call 999.

Ipswich West & Hadleigh

We have been busy in Hadleigh and have had some good results. Things seem to be back to some sense of the 'new normal' and people have adapted well. We are all getting our heads around keeping distances in the pubs and shops and everyone seems in general to accept that this is how it is. Out and about people are happy to chat and it has been good to see a few of you while out on patrol.

I have taken part in a number of community problem solving meetings in Hadleigh and Ipswich which has included meetings with relevant agencies to tackle the issue of cars racing around Tesco's and Pinewood area of Ipswich. Elsewhere, I visited Jimmy's Farm on 17 July with PC Mike Small and PC Dom Woodmansee. It was great to get out there and meet people again, socially distanced of course! PC Small and myself even got to meet the meerkats, including 'Stevie' who likes to escape! Strong words of advice were given! I am looking forward to meeting more people over the coming weeks and will certainly be trying to get to as many places as I can.

On the Ipswich West SNT, we have seen an increase in the number of calls from the public similar to a level that they were prior to the start of 'lockdown'. Despite the increase in demand, we are still able to focus on our key policing priorities which are 'cuckooed' addresses and patrolling areas that are known crime 'hotspots' for acquisitive and violent crime. In relation to cuckooed addresses, we are working closely with our partners at the borough council and 'ASB' teams as well as some private housing providers. With this partner agency approach, we are able to act swiftly to respond to addresses where vulnerable people have been put at risk by persons taking over. In the last two months we have disrupted seven locations and made five arrests and in doing so were able to safeguard the genuine occupants of each address where this activity was taking place.

Recently, we executed a search warrant at an address in west Ipswich where a cannabis factory was closed down. A male has been charged and remanded. If you suspect that these types of activities are taking place where you live please report this to us through our website or anonymously at 'Crimestoppers'.

Every summer period, we focus on locations that are subject to ASB. We have started these proactive patrols which aim to provide high visibility reassurance and disruption where ASB and crime is reported. The patrol areas change according to the latest reports. So again, if this is a concern in your community, please update us so that we can respond accordingly.

Ipswich West SNT



Inspector
Kirsty Graefe



Engagement Officer
PC Mike Small



Engagement Officer
PC Sarah George

Ipswich Central

Since the lockdown restrictions have been eased and shops have started to resume business, there has been an increase in shoplifting. The SNT are out on foot patrol in the town centre daily, officers and PCSOs alike, are gathering good community intelligence from people who openly approach officers in person to report drug dealing or any other community issues.

By targeting the "hot spots" the SNT have had some really positive results through community led intelligence, leading to good stop searches where class A drugs and cash have been recovered. Subsequent warrants at the detainees addresses have also been successful.

Ipswich Central continues to monitor addresses vulnerable to 'cuckooing'. With regular welfare checks we are able to monitor the wellbeing of the occupants and hopefully deter further 'cuckooing'. Due to the nomadic nature of drug dealers who target and exploit vulnerable people, we actively encourage the public in areas affected by drug dealing activity to report to us any suspicious or unusual activity in their residential areas.

Rough sleeping has seen a slight increase in the town but still remains below 10. This has coincided with the increase in footfall in the town which in turn increases the opportunity to beg. The local SNT and street rangers are disrupting begging daily and engaging with the shops that are having issues and encouraging them to report such activity.

The shops in the town continue to staff the queues of customers who on the whole are sticking to social distancing guidelines and have generally had few issues in this regard. We continue to work closely with our local businesses to ensure any issues are reported early and offenders are identified so preventative measures can be put in place for ASB.

With the good weather PC Mike Small and PC Dom Woodmansee have continued the PHSE work (outdoors and socially distanced) with St Margaret's school. Having worked with the children over the last year it was sad to see a lot of them for the last time before they all go off to various high schools, having built a great rapport with them. The children were always really enthusiastic and fun to work with and showed a really good retention of the inputs they had around staying safe, online safety and conduct, county lines, and policing in general.

Ipswich Central SNT



Inspector
Vicky McParland



Engagement Officer
PC Dominic Woodmansee

Ipswich East, Felixstowe & Woodbridge

The Felixstowe and Woodbridge SNT have been on visible patrols to tackle ASB in parks and open spaces. Operation Lolworth is a policing initiative where officers patrol "hot spot" areas that are most effected by ASB and crime. Local officers have been engaging with the public to provide reassurance. We continue to work with partner agencies to take steps to deter and prevent further incidents of crime and ASB.

County Lines disruption continues with stop searches and visits to vulnerable addresses. Meanwhile, during the summer months the reporting of theft and burglary offences increases and social media and Police Connect continue to be used to inform the public what is happening in your area.

As Community Engagement Officer I have been supporting the Safer Neighbourhood with high visibility patrols in Felixstowe and Woodbridge. I have visited a number of shops and supermarkets where I have spoken to staff and customers about local issues and offer advice on crime prevention.

As the world starts to find a new normal the SNT in east Ipswich have been speaking with residents. Our Police Community Support Officers have continued to show a great presence out on foot with patrols in parks, residential and commercial areas on a daily basis. This has been a really positive experience as the public have shown an interest in policing and approached officers for a chat. I have taken to Police Connect and our social media sites to advertise a number of "street meets" outside shops such as Sainsbury's and Co-op stores. This is an opportunity for the community to be told in advance of where we will be and it has been beneficial to hear from residents what their concerns are and discuss local policing issues.

Of course, usually this would have been the time we see a lot of our older primary school students before they embark on high school life. I'm really pleased to have been invited in to support our School Liaison Team as we have conducted some socially distanced talks about staying safe during summer holidays and walking to school. This has coincided with discussions around acting responsibly and respectfully when out and about as well as when using online platforms.

Finally, proactive work has continued as officers have targeted road traffic offences, making seizures and issuing tickets for no insurance, along with a number of stops and encounter checks of individuals resulting in seizure of cannabis.

Ipswich East SNT



Inspector
Soraya Francis



Engagement Officer
PC Rachael Partridge



Engagement Officer
PC Hannah Creasey

WEST

Area Commander



T/Superintendent
Simon Mills

You can report a number of non-urgent crimes online via our website - suffolk.police.uk/contact-us
You can also call the police on 101 to report crimes and other concerns that do not require an emergency response.
In an emergency, always call 999.

Mildenhall

In June a male was convicted of cruelty to an animal in Newmarket. Jack Green of Sycamore Avenue in Golcar of Huddersfield appeared at Ipswich Magistrates court on Wednesday 24 June and was given a custodial sentence 12 weeks. It follows a catalogue of incidents where a female Patterjack X Dachshund called Pippin was subjected to a life of cruelty at the hands of Green between 18 January 2019 and 2 May 2019. The vet established that her right foreleg showed a severe leg injury that would require some intensive treatment. Pippin was rehomed having initially being placed into the care of the RSPCA and attended a vet every two days for three months so she could have her bandages changed. Following her rehoming, Pippin continues to learn to interact with her new family and other animals.

On a related matter, as many of you are aware we have been investigating some theft of dogs in the area which we know is concerning a lot of people. We have issued some advice in relation to how secure your premises and remember to report anything suspicious.

The area has now seen the introduction of parking wardens who now deal with all the parking in the towns. This has made a difference to us as they now deal with parking issues and assist us when we have complaints.

We have been very lucky over the last few months with deliveries of food from companies in the local community. This helped keep our spirits up and made sure officers were fed well so thank you very much - it is really appreciated. Remember, we have now started to get back out and about in the local community so please come and speak to us if you see us.

Mildenhall SNT



Inspector
Mark Shipton



Engagement Officer
PC Helen Self

Sudbury & Haverhill SNT



Inspector
Kevin Horton



Engagement Officer
PC Darren Marshall

Sudbury & Haverhill

We are pleased to announce PC Darren Marshall is to take over the hot seat of Community Engagement Officer in Sudbury. Once you've met PC Marshall, you do not forget, Anyone who knows Darren will tell you of his obvious passion to engage with the public alongside his brilliant eclectic descriptive dialogue!

Sudbury have had a productive time recently tackling issues in Minden Road & Cavendish Way. Proactive patrols have seen two of our SNT colleagues make 23 arrests between them since May 2020 in connection of drug and ASB around this part of town. Our 'Design Out Crime' officers have visited the area to give our local partners advice on ongoing safety initiatives and also support bringing in CCTV to the area. The SNT and relevant departments of the council got together to carry out community engagement and a clear up of the local area to make the area a far more pleasant place to live. This work is ongoing and we hope both ourselves, but more importantly, local residents start to see improvements soon.

As lockdown restrictions have been relaxed some areas needed additional patrols to reduce ASB at Bures recreation ground, Belle Vue Park and Shawlands Wood in Great Cornard. As well as patrols we have held 'pop up' engagements to listen to local views and give reassurance that we are aware of the issues and will do all we can to reduce them. These have proved popular and we look forward to more of these 'pop up' engagements in the future, Check our social media forums for details.

Following some reports of motor vehicle ASB across both Sudbury & Haverhill, officers are now working with roads policing team to engage and educate road users and where necessary deliver enforcement action. Other activities have included cycle patrols across the town, which has had a very positive response from residents and speed enforcement across key locations in Sudbury and surrounding villages.

Bury St Edmunds

We have continued our focus on street drinking and aggressive begging. Whilst we have made great strides over the past 12 months, our work with partners on these issues continues.

In recent weeks, a number of people, classified as homeless, have been provided with accommodation in local hotels. This has enabled us to engage and encourage those people to return to their temporary homes when they have been found to be in the town. It is clear that some of the behaviour from a small minority of people remains unacceptable. However, this is not a solely police related issue, as there are often complex social and health factors to consider with what is a sensitive topic.

Rest assured, as the town continues to get back to a degree of normality with the relaxation of some Covid measures, you will continue to see officers in the town centre, engaging with those who are causing issues, ensuring that they are provided the support they need to find appropriate accommodation and keep themselves safe, but we will continue to take robust positive action where anti-social behaviour occurs.

Targeting known addresses where class A drug dealing/use and related County Line activity is taking place is continuing. For example, at the end of June we made four arrest at Jankyns Place in the town and we recovered a small quantity of drugs, cash and a number of mobile phones from the address. We are working as part of a multi-agency team to support the vulnerable, reduce criminality and take drugs off the street. If you know of any such activity please tell us and we will investigate. Anyone with information should contact Suffolk Police on 101 or call Crimestoppers anonymously on 0800 555111. Alternatively, visit our website if you want to report something.

Bury St Edmunds SNT



Inspector
Matt Paisley



Engagement Officer
PC Jon Gerrish

Stowmarket SNT



Inspector
Shawn Wakeling



Engagement Officer
PC Stefan Henriksen

Stowmarket

As the Covid 19 restrictions change, its been good to get out to our communities again. We have been on foot patrols and carrying out 'pop up' street meets in many of our towns and villages across mid Suffolk. Our Mid Suffolk district council funded PCSO has been racking up the mileage, on patrol around Stowmarket on his bike - he is currently averaging around 30 miles a week!!

Stowmarket Town Council are kindly allowing me back on Saturday morning market days, so I have booked in my stall for 1 August, and then on 19 September. I will be in my usual spot (corner of Wilkes Way and Crowe Street) from 9am to 1pm. I will be marking bicycles, have crime prevention advice available and be on hand to talk about any issues or about local policing. During the last few months. Mid Suffolk and south Norfolk have had a series of burglaries. We have been working hard behind the scenes to identify those responsible, and we have also carried out a lot of pro-active work, including increased and targeted patrols.

On Wednesday 8 July 20, we carried out four warrants simultaneously in Wortham, Stowmarket and Ipswich. We arrested five people for conspiracy to steal over several months. A further person was also arrested for an unrelated offence. Property, including alcohol, gardening equipment, tools, bikes, fishing equipment, amongst other property was seized, along with cash and drugs. The investigation is still ongoing and more arrests may follow.

A BIRD'S EYE VIEW

TRAINED DRONE PILOTS REVEAL THE BIGGER PICTURE FOR SUFFOLK POLICE

Suffolk Constabulary have been in partnership with Suffolk Fire and Rescue Service (SFRS) for 2 and a half years now. We are sharing the knowledge, equipment and staffing to provide an effective and cost-efficient drone capability for the population of Suffolk and support to Norfolk Constabulary.

There are a number of trained pilots throughout both organisations that are able to provide 24/7 cover as part of their existing duties.

As a partnership we operate drones for a wide and varied number of tasks, although the primary use is and always has been to preserve life. Whether it is to search for a missing person or scan the scene of an accident to locate the injured a drone can be used to quickly and efficiently search large open spaces within minutes. It also enables us to search open marshland and coastlines where access may be an issue or pose a risk to the emergency services.

SFRS will often use the drones for identifying hotspots in large fires using the thermal imaging camera, or to identify the spread of field fires. Additionally, it provides an immediate response to the police when required for high risk missing person searches or other urgent requirements.

The Constabulary uses these drones for a number of different tasks, although investigating criminality is a large part of the work, there is also a considerable amount of time spent on intelligence gathering and large public events.

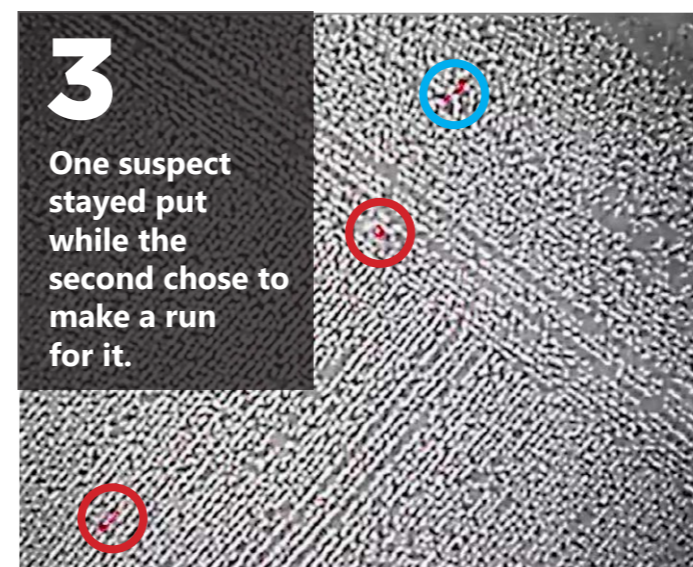
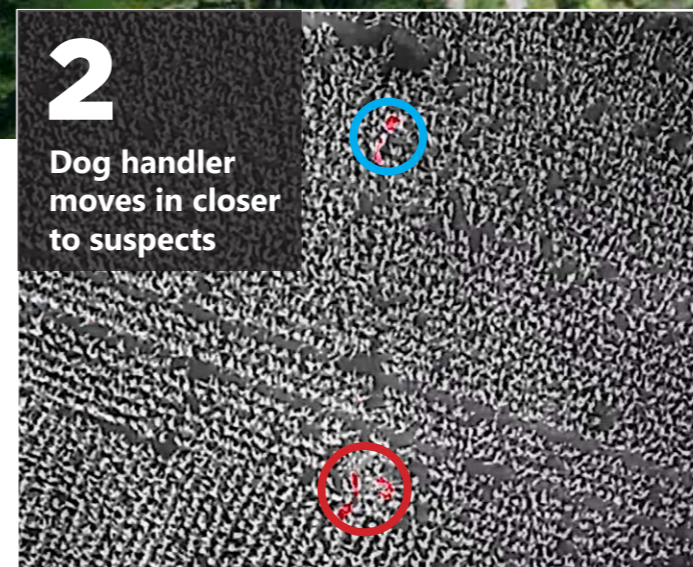
The thermal imaging camera on a drone is an ideal tool for confirming the intelligence relating to addresses that may be used for cannabis cultivation. A difference in colour of the thermal imaging indicates a significant difference in temperature. Although this does not prove there's a cultivation, that along with an intelligence submission, provides the police with enough data to request a search warrant on that address. Historically, the police

would have used a helicopter for this purpose, a drone is a far more cost-effective option.

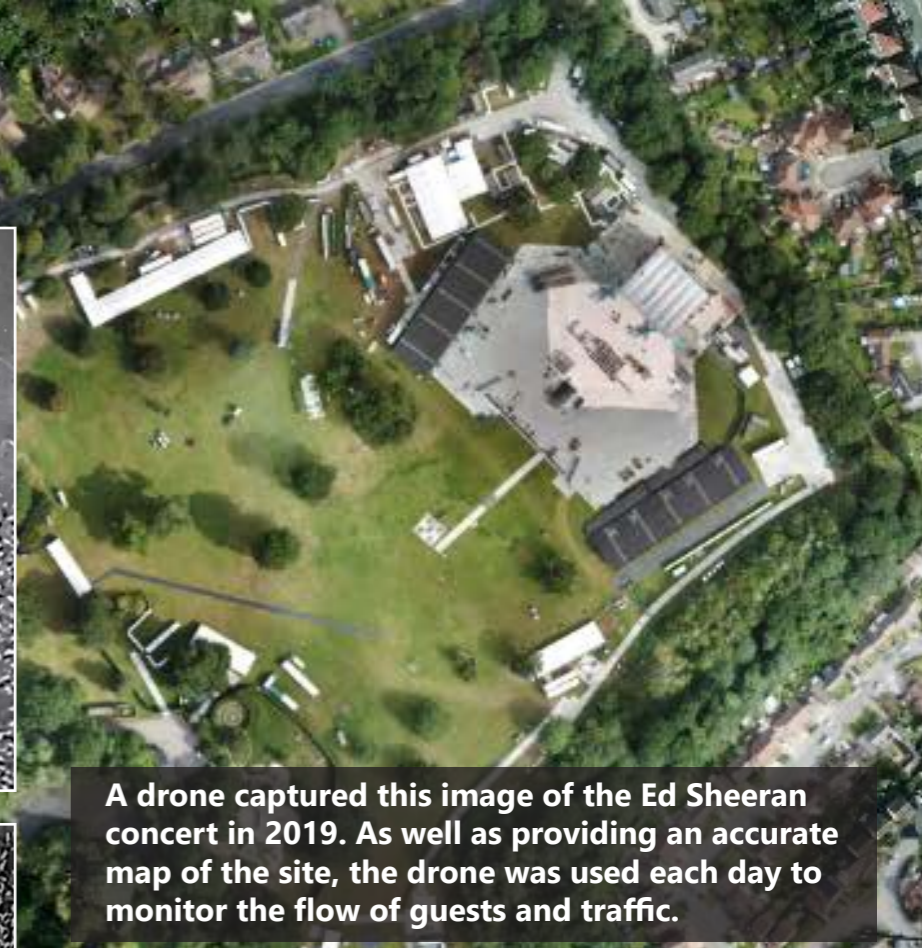
For large public events the police will often use the drones to generate a complete overview of an area so that the images of the locations are as up to date and accurate as possible. For instance, the Latitude Festival site for the majority of the year is open fields with live stock, but for a few weeks of the year it is converted into a music festival visited by 50,000 guests. Therefore, on the day prior to opening the entire site is mapped and overlaid onto satellite imagery, giving an accurate overview to assist the festival organisers and emergency services. The same process was followed for the Ed Sheeran concerts in 2019, as well as the mapping the drone was used each day to monitor the flow of guests and traffic.

From a criminality perspective the drones can be used to search for stolen property or to assist when conducting a search warrant on an address. A drone is also an exceptional tool in searching for people who wish to avoid the police. The three images to the right demonstrate how the Technical Support Unit drone team were able to assist the rural and wildlife policing team in the apprehension of two people believed to have been engaged in hare coursing. The optical and thermal images are both displayed here to demonstrate how useful the thermal camera is when it comes to searching in rural locations.

The first image shows the police dog handler being guided down the edge of the field so that they are parallel with the suspects, the second image shows the officer moving in and the last image shows that although one suspect stayed put the second chose to make a run for it. The observations remained on the first suspect until he was in the custody of the police officer and then the second was quickly relocated and apprehended using the same tactic.



Whenever we are out working we always get asked the same questions, in fact you can even get a t-shirt with the answers on, they are that common!



So, here are the basics:

- On average a drone can stay airborne for approximately 25 minutes before a battery change, and yes, we have plenty of batteries.
- Our maximum height we can fly at is 120m, this is a requirement of the Civil Aviation Authority rather than an equipment limitation.
- Providing we can maintain a line of sight to the aircraft (which is another CAA requirement) we can operate up to 1km away from the pilot.
- We need a clear area around us to take off and land and must not fly within 50m of any person, building or vehicle that we do not have control over.
- As an emergency service we hold an exemption that allows us work outside of these parameters providing it is justifiable, i.e. an immediate risk to life. on each of these occasions we report the use of the exemption to the CAA.

One question we are often asked is "Was it expensive?", and the best response to give is "Not compared to a helicopter".

Constable's COUNTY



SUFFOLK
CONSTABULARY



Suffolk Police and
Crime Commissioner

Making Suffolk a safer place to live, work, travel and invest